



### Wondering about Wetlands

### Learning Log 1

NAME \_\_\_\_\_

DATE \_\_\_\_\_

We are using a model to help us learn about wetlands.

Our Question is:

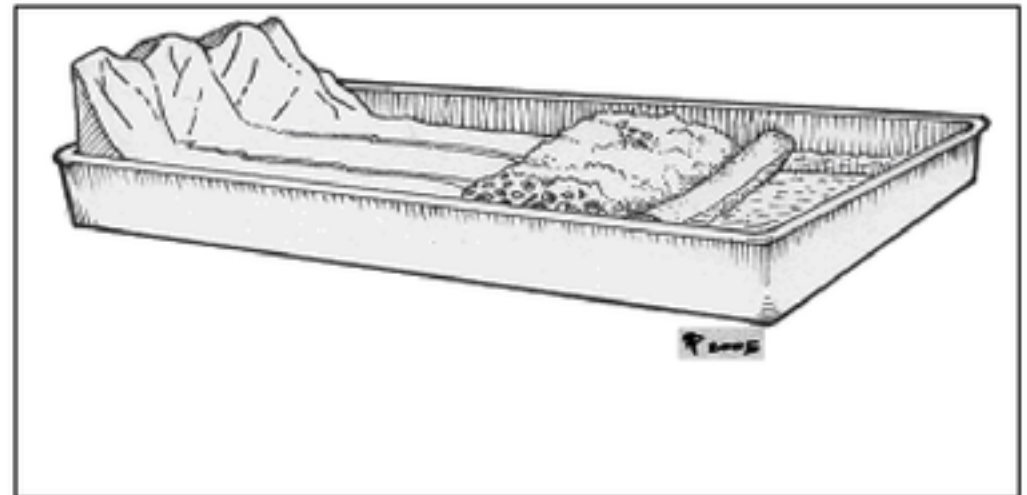
---

---

---

---

---



My Observations:

---

---

---

When we poured "rain" on the model...

---

---

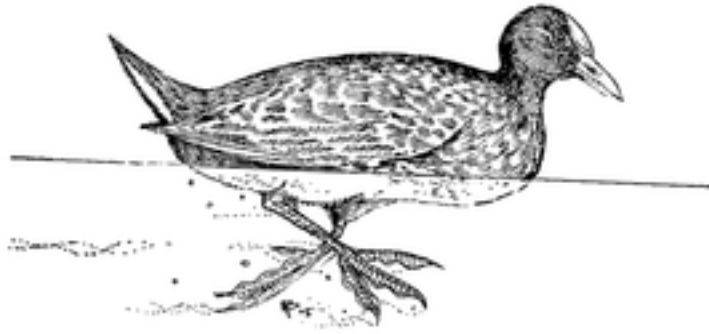
---

My Hypothesis:

If we remove the wetlands (sponges)....

---

---



My hypothesis \_\_\_ was or \_\_\_ was not supported. I think this is because...

---

---

---

---

---

---

---

---

---

---

Wetlands help our community by:

---

---

---

---

---

---

---

---

---

---

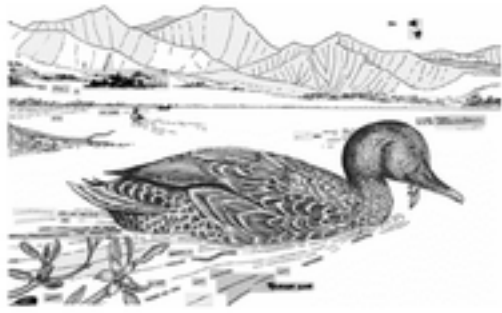


# Learning Log 2

## Wondering about Wetlands

DATE \_\_\_\_\_

NAME \_\_\_\_\_



Draw a picture of the model we made in class. Show the mountains, wetlands, and the ocean.

Scale: The distance from the bottom of the *pali* to the ocean is 8 miles. Draw your model to the scale of 1 mile = 1 inch.



### KĀNE'OHE AHUPUA'A MAP

