



ARE WE RELATED?

PHYLUM FISHING CARDS - INVERTEBRATES

Instructions: Copy and cut out five sets of cards to be distributed one to each group of students.

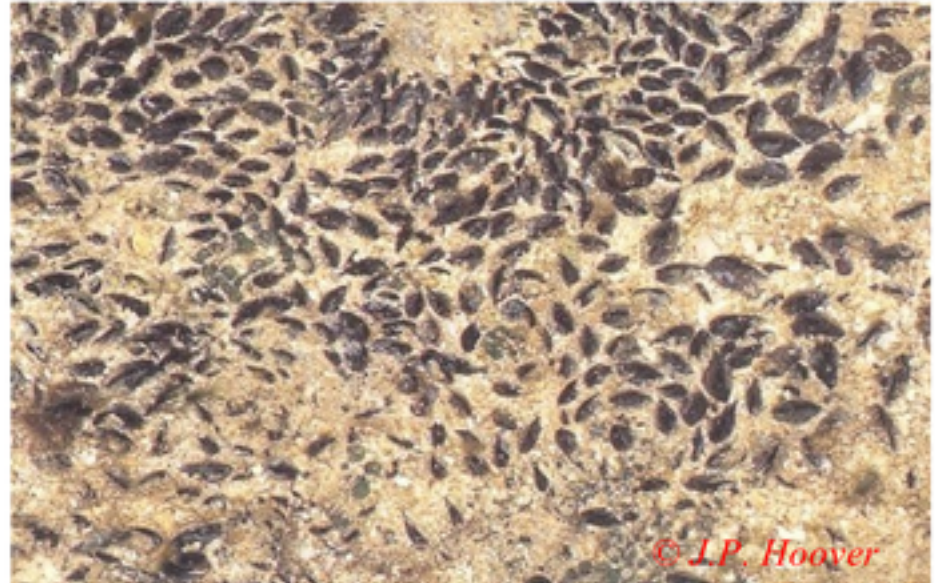
Phylum: Mollusca

***Pā* (Black-Lipped Pearl Oyster)**



© J.P. Hoover

***Kio Nahawele* (Hawai'i Mussel)**



© J.P. Hoover

***Pūpū Kupa* (Rounded Cockle)**



© J.P. Hoover

***Leho Kupa* (Snakehead Cowry)**



© J.P. Hoover

***Mūhe'e* (Squid)**



© J.P. Hoover

***He'e Pūloa* (Ornate Octopus)**



© J.P. Hoover



***Pa'imalu* (Portuguese Man-of-War)**



Glass Sea Anemone



Phylum: Cnidaria

***Pōhaku Puna* (Finger Coral)**



***Ko'a* (Cauliflower Coral)**

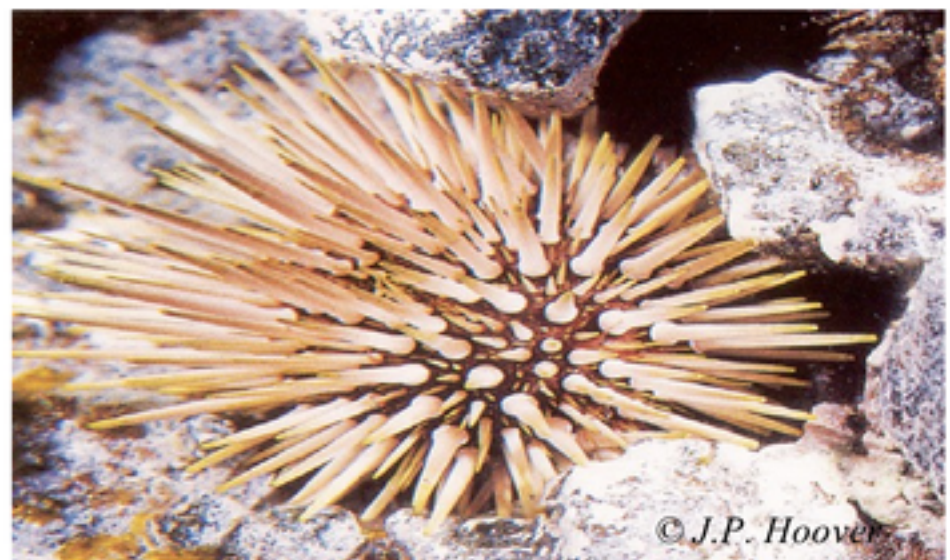


Phylum: Echinodermata

***Weli* (Conspicuous Sea Cucumber)**

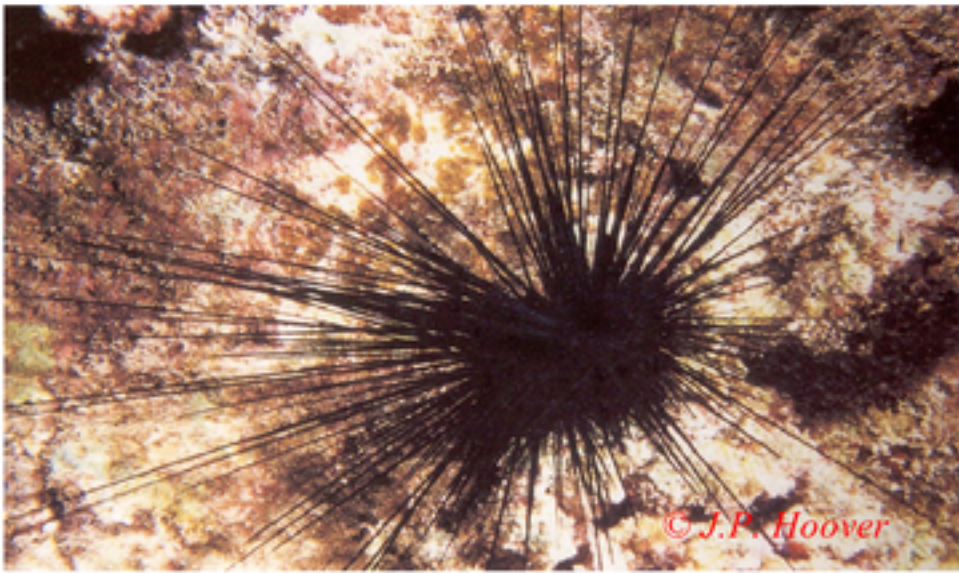


***'Ina Kea* (Rock-Boring Sea Urchin)**





Wana (Long-Spined Sea Urchin)



© J.P. Hoover

Pe'a (Spiny Brittlestar)



© J.P. Hoover

Phylum: Arthropoda

Ula (Spiny Lobster)



© J.P. Hoover

'Alakuma (Seven-Eleven Crab)



© J.P. Hoover

Pokipoki (Box Crab)



© J.P. Hoover

'Ōpae Kai (Harlequin Shrimp)



© J.P. Hoover



Phylum: Annelida

***Kio Po'apo'ai* (Feather Duster Worm)**



© Hawai'i C's Aquaculture

***'Aha Hululu* (Orange Fire Worm)**



© J.P. Hoover

Phylum: Chordata – Bony Fish

***Hinālea Lauwili* (Saddleback Wrasse)**



© J.P. Hoover

***Uhu* (Spectacled Parrotfish)**



© J.P. Hoover

***Mamo* (Sergeant Major)**



© J.P. Hoover

***Pūhi Lau Milo* (Undulated Moray Eel)**



© J.P. Hoover



***Lauwiliwinukunuku'oi'oi* (Common Longnose or Forceps Butterflyfish)**



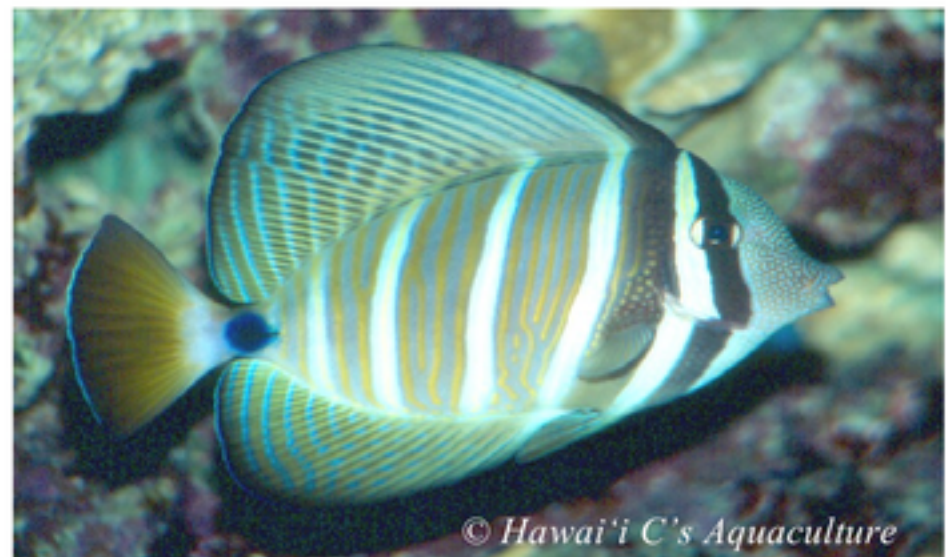
***Kīkākāpu* (Ornate Butterflyfish)**



***Pualu* (Yellowfin Surgeonfish)**



***Māneoneo* (Sailfin Tang)**



***Weke 'Ula* (Yellowfin Goatfish)**



***Ulua Akea* (Giant Trevally or Jack)**





***Pāpio* (Young Trevally or Bigeye Jack)**



© Hawai'i C's Aquaculture

***To'au* (Blacktail Snapper)**



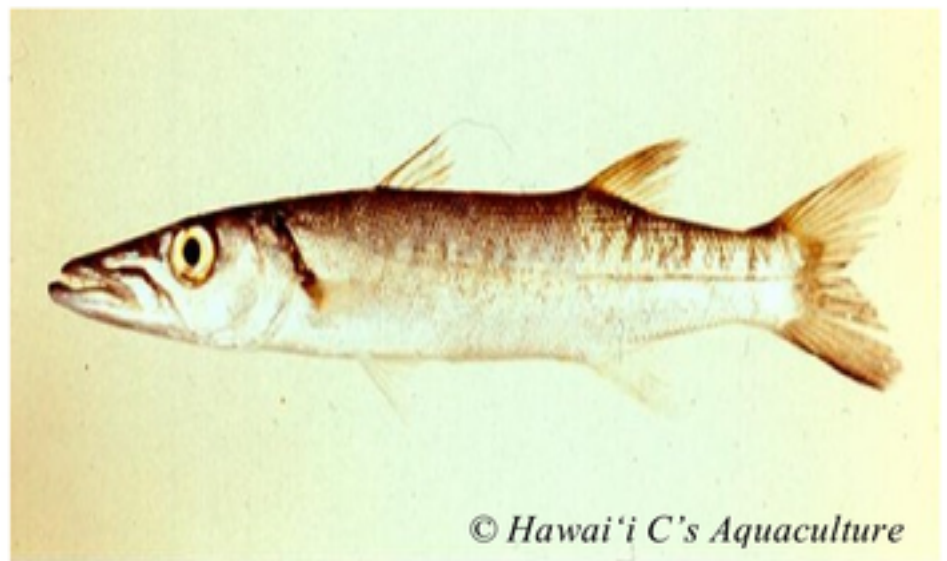
© J. P. Hoover

***Roi* (Peacock Snapper)**



© J. P. Hoover

***Kākū* (Great Barracuda)**



© Hawai'i C's Aquaculture

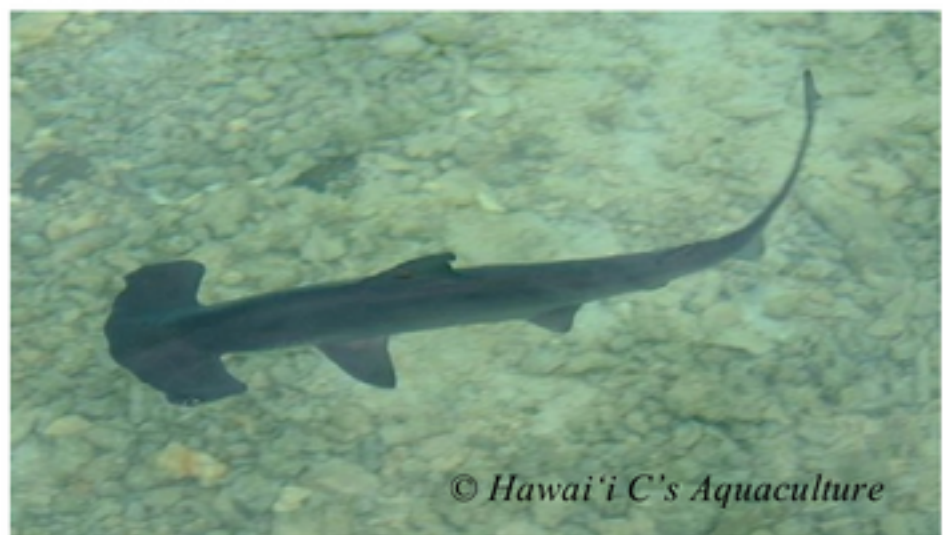
Phylum: Chordata – Cartilaginous Fish

***Hihimanu* (Hawai'i Stingray)**



© J. P. Hoover

***Māno Kihikihi* (Scalloped Hammerhead Shark)**



© Hawai'i C's Aquaculture



Phylum: Chordata – Reptiles and Mammals

***Honu* (Green Sea Turtle)**



***Nai'a* (Bottlenose Dolphin)**





ARE WE RELATED?

LEARNING LOG - 4

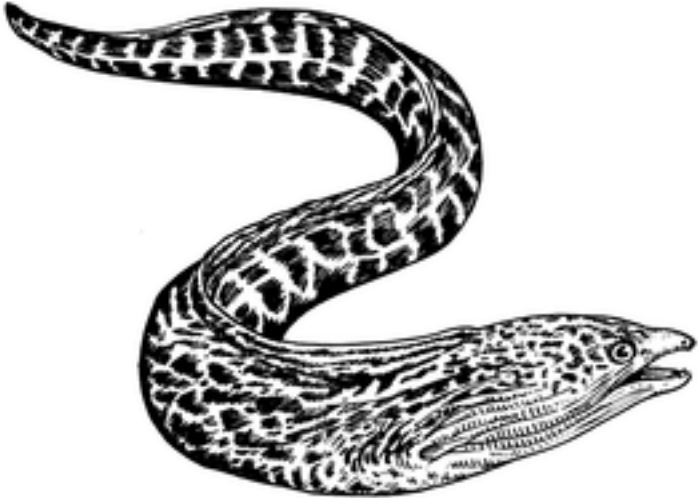
Name: _____

Date: _____

Your Challenge: Complete a phylum booklet.

- Draw pictures of at least two organisms from each phylum we studied.
- Write descriptions of at least three anatomical features that make each phylum unique. The first page is started for you. Add additional pages to complete the other phyla.

Chordata

Draw it.	Describe it. What are the anatomical features of these organisms? Do some research and find out more about each phylum.
	<ul style="list-style-type: none"> • a vertebrate with a backbone

Complete additional pages for: **Echinodermata, Mollusca, Arthropoda**
Coelenterata, and Annelida